

ALUMINIUM + WOOD ALUMINIUM & WOOD

WINDOWS

DOORS

CURTAIN WALLS

DERAD SYSTEM SOLUTIONS

Wood+Alum
Alum-Clad Wood
Solid Wood
Aluminium



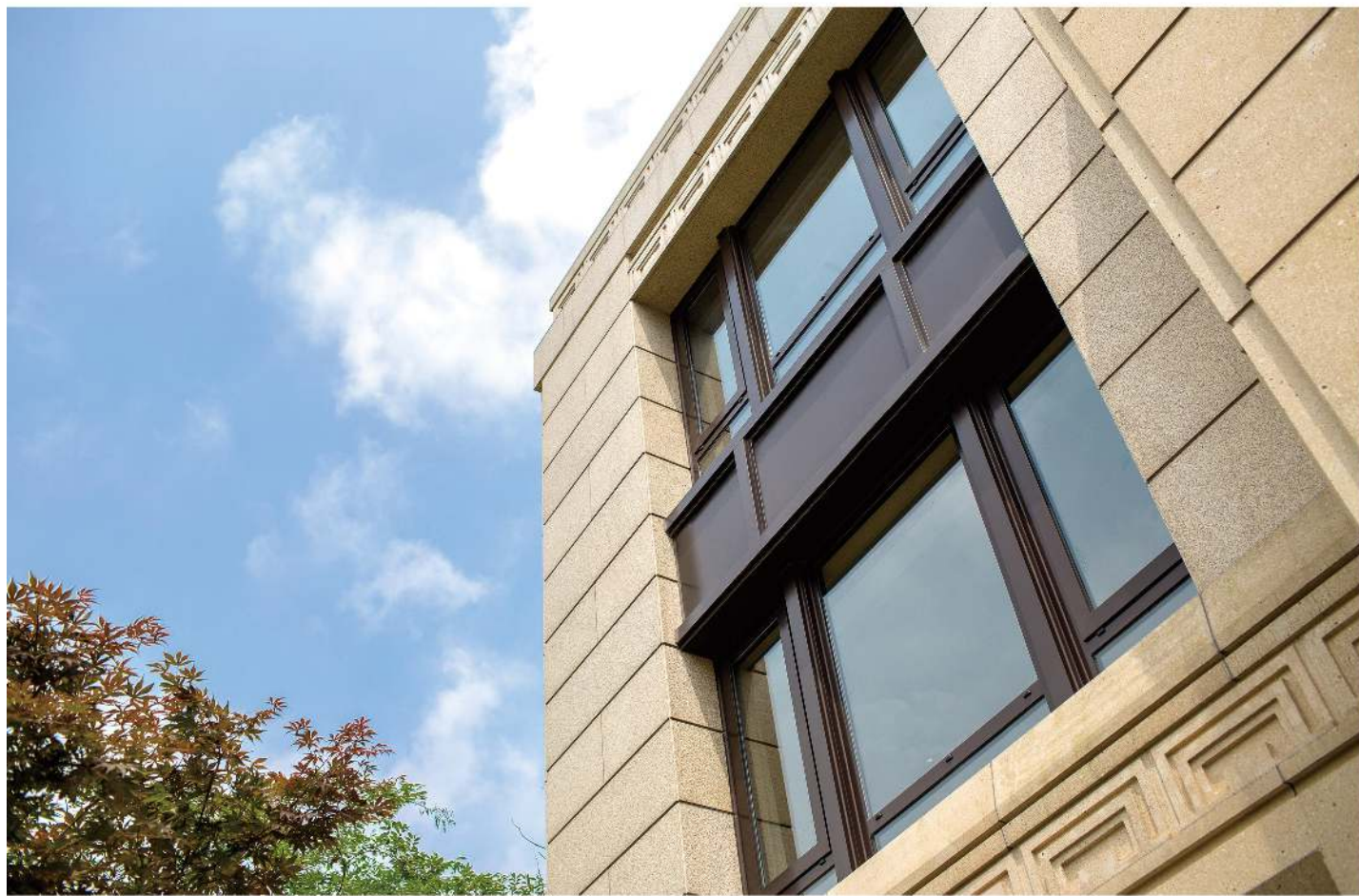
Shanghai DERAD Windows & Doors Co., Ltd

38 Yuanshun Rd, Pudong New Area, Shanghai, China

Postcode: 201399 Tel: +86 (0)21 61181089

www.derad-group.com www.deradwindows.com info@derad.cn

DERAD



**BUILD
YOUR
VISION**

CONTENTS

About DERAD	02
Why choose DERAD	04
Our Partners	08
Aluminium Outward Opening Window	10
Aluminium Inward Opening Window	12
Wood-Aluminium Outward Opening Window	14
Wood-Aluminium Inward Opening Window	16
Aluminium Casement Door	18
Aluminium Sliding & Bi-fold Door	20
Wood-Aluminium Sliding Door	22
Aluminium Sliding Window	24
Product Configurations	26
DERAD Project Pictures	28

Shanghai DERAD Windows & Doors Co.,Ltd



Headquarters

DERAD was established in 1988 and has steadily grown to be one of the largest and most successful family owned window companies in China. The factory size is about 77,000 square meters. The annual production capacity was estimated to be one million square meters in 2017.

DERAD offers a comprehensive range of aluminium, wood-aluminium, solid timber and uPVC windows and doors for residential and commercial application. In addition, conservatories, curtain walls and balustrades are also available to complement our window & door systems providing full building solutions.



■ Shanghai DERAD

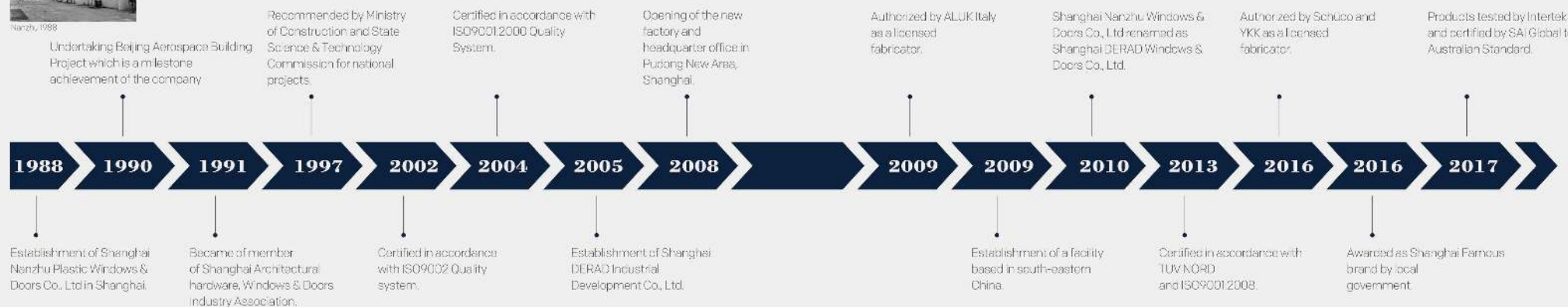


■ Anhui DERAD



Nanzhu 1988

» Timeline



Production

DERAD has two manufacturing plants individually located in Shanghai and south-eastern China, together contributing to one million square metres annual production capacity in 2017. Both equipped with latest German & Italian CNC machining centres which are operated by highly trained staffs, they are able to process aluminium and wood faultlessly and precisely.

Combined with the exquisite craftsmanship, automation and handcraft converge beautifully within DERAD products. At DERAD, production of the windows is also eco-friendly. Solar energy has been widely used in the production facilities. Water based coatings are used for wood protection.



Gasket Insertion



Two-head Profile Cutting Machine



CNC Machining Centre Operation



Drilling & Punching Tools



Profile Connecting Machine



Profile Corner Connecting



UPVC Profile Corner Soldering Machine



CNC Machining Centre Operation



Aluminium Profile Bending



Wood Profile Milling Tools



CNC Machining



CNC Machining Centre Operation



Custom-shaped Wood Profile Processing



Automatic Wood Profile Coating Line

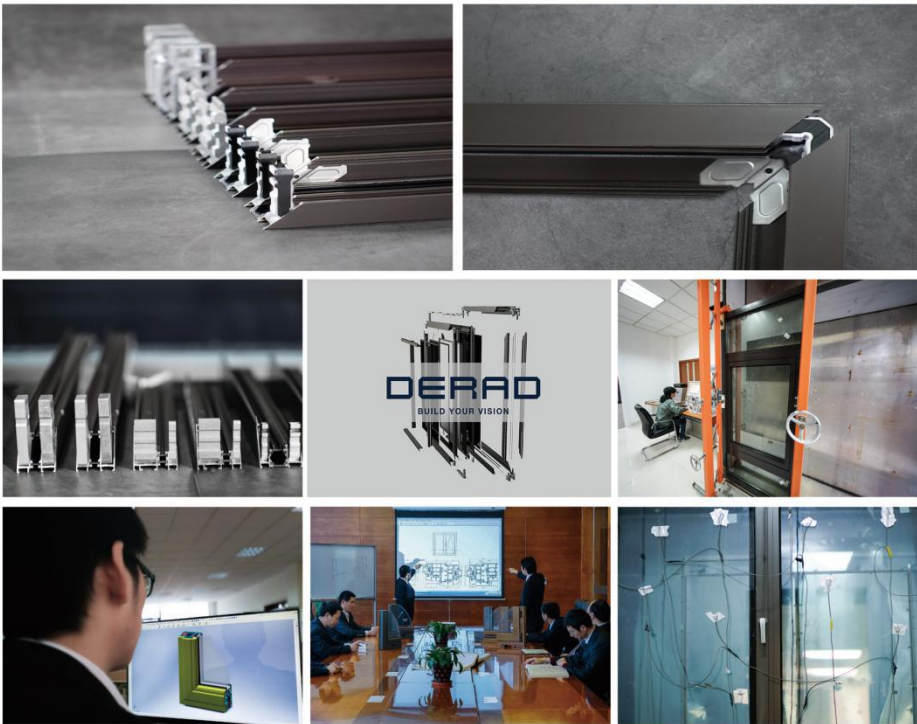


Wood Profile Coating

R&D: Focus on Renovation

DERAD employs around 350 people within its operations throughout China, with significant industry skills and expertise. DERAD understands the significance of meeting the requirements of building regulations in different countries. In-house testing lab helps to facilitate the R & D process,

where the products are designed on a range of performance criteria including water, wind, airtightness, acoustic and thermal insulation.



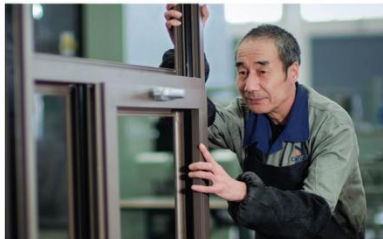
Professional Export Team

DERAD export team consists of professional sales representatives who have years working experience in International business. They could assist you through each stage of a project from recommending the right products and quotation to packaging, shipment and installation. In addition, there are technical engineers in the export team who work closely with our sales personnel and communicate with clients timely and effectively to ensure the successful on-time project delivery.

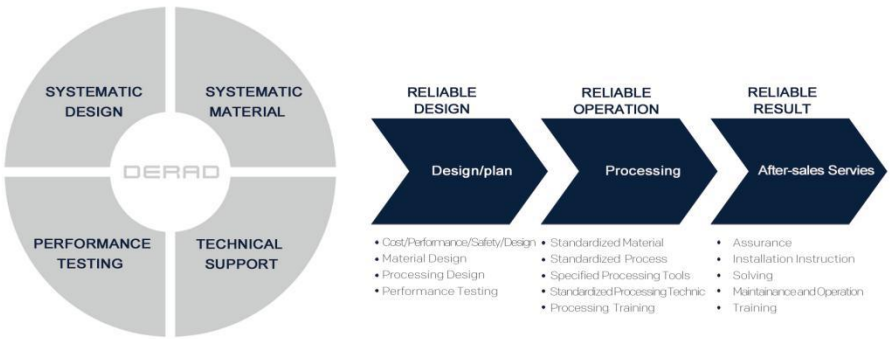


Quality Control

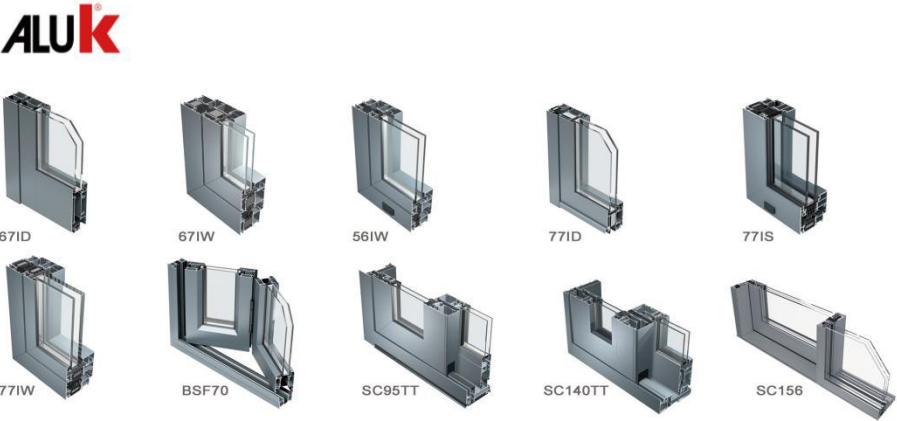
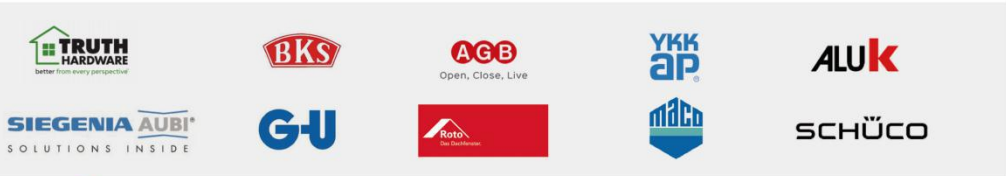
Quality is maintained throughout the process, since DERAD strongly believes that quality cannot be compromised. DERAD sticks to a high standard of inspection and test plan(ITP) from incoming material to production and final packaging inspection to ensure our products and services are above and beyond industrial standards. DERAD adopts modern ERP system which allows the tracking and documentation of the activities, therefore reducing or even eliminating the error percentage and delivering the units within the designated time.



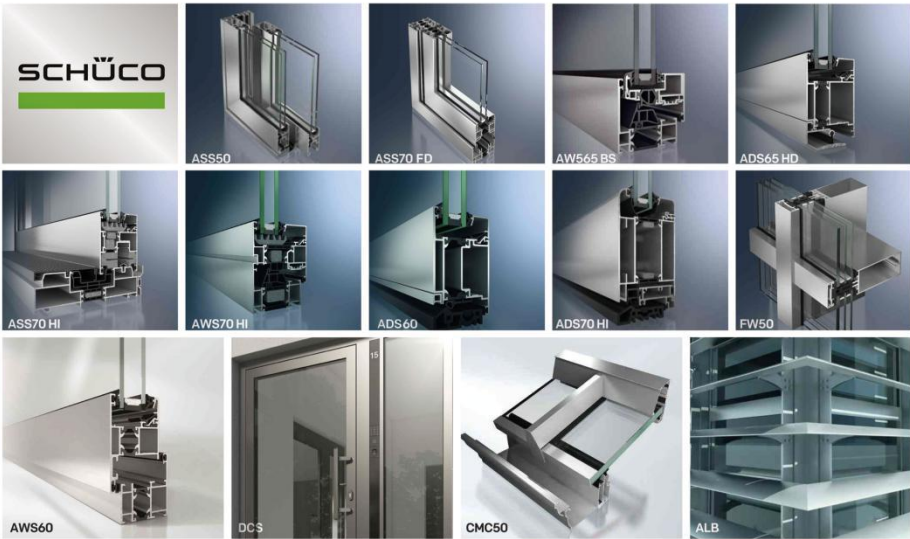
ISO9001 quality management systems certified by 



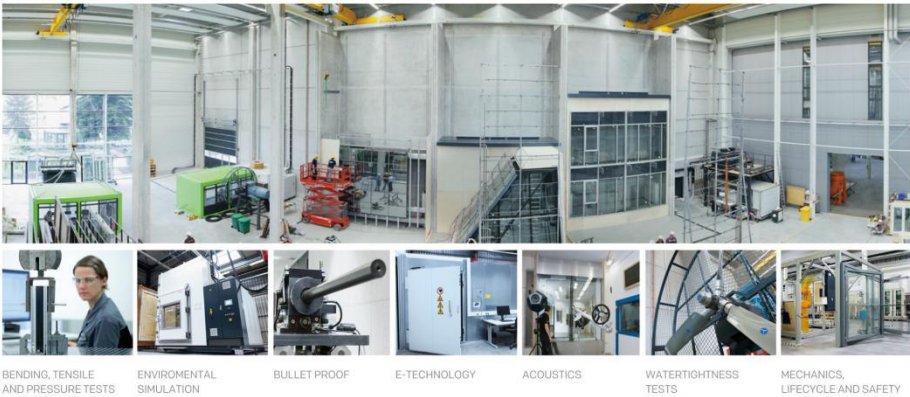
Since 2009, DERAD has been co-operating with world-leading system companies. We are an authorized licensed manufacture of Schüco, ALUK, YKK window systems. This ensures that we are capable of fabricating products- with highest technical design standards & equally high quality. Additionally, DERAD has been co-operated with many well-known hardware suppliers, including Kin Long(China), Siegenia(Germany), Roto(Germany), G-U(Germany), Dr Hahn(Germany), Truth(USA), AGB(Italy), and MACO(Austria).



Accreditamento ALUK Lab









Schüco Technology Center



DWS Series Aluminium Outward Opening Window



MAX.Product Performance

	Watertightness	E900 (DIN EN 12208)
	Air permeability	4 Class (DIN EN 12207)
	Resistance to wind load	C4/B4 Class (DIN EN 12210)
	Thermal insulation	$U_r \geq 1.4 \text{ W/m}^2\text{K}$ (DIN EN ISO 10077-2)
	Noise insulation	40db (DIN 4109)
	Burglar resistance	RC2 (DIN EN 1627)

DERAD

PRODUCTS



DWS60 Aluminium Outward Opening Window

Frame Dimensions

Frame	60mm
Sash	67mm

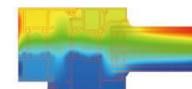
	profile design	three-chamber profile
	thermal insulation	18.6mm
	seal gasket	two level sealing
	glazing	22-35mm
	hardware	max.60kg



DWS65 Aluminium Outward Opening Window

Frame Dimensions

Frame	65mm
Sash	73mm



	profile design	three-chamber profile
	thermal insulation	24mm
	seal gasket	two level sealing
	glazing	22-40mm
	hardware	max.60kg



DWS70 Aluminium Outward Opening Window

Frame Dimensions

Frame	70mm
Sash	79mm

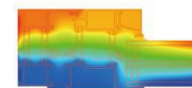
	profile design	three-chamber profile
	thermal insulation	high insulating profile 30 mm
	seal gasket	two level sealing
	glazing	22-45mm
	hardware	max.60kg



DWS75 Aluminium Outward Opening Window

Frame Dimensions

Frame	75mm
Sash	84mm









	profile design	three-chamber profile
	thermal insulation	multi-chamber insulating profile 35.3mm
	seal gasket	3 level sealing with foam seal gaskets
	glazing	22-50mm
	hardware	max.60kg
	thermal insulation option	polyamide foam

» DWS Series Aluminium Inward Opening Window



MAX.Product Performance

	Watertightness	9A (DIN EN 12208)
	Air permeability	4 Class (DIN EN 12207)
	Resistance to wind load	C4/B4 Class (DIN EN 12210)
	Thermal insulation	$U_r \geq 1.3W/m^2K$ (DIN EN ISO 10077-2)
	Noise insulation	40db (DIN 4109)
	Burglar resistance	RC2 (DIN EN 1627)

DERAD

» PRODUCTS



DWS52 Aluminium Inward Opening Window

Frame Dimensions	
Frame	52mm
Sash	61mm

	profile design	double-chamber profile
	thermal insulation	frame:28mm sash:24mm
	seal gasket	three level sealing
	glazing	22-35mm
	hardware	max.160kg visible max.170kg concealed



DWS60 Aluminium Inward Opening Window

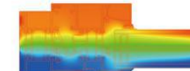
Frame Dimensions	
Frame	60mm
Sash	67mm

	profile design	three-chamber profile
	thermal insulation	18.6mm
	seal gasket	three level sealing
	glazing	22-45mm
	hardware	max.160kg visible, max.170kg concealed



DWS65 Aluminium Inward Opening Window

Frame Dimensions	
Frame	65mm
Sash	73mm

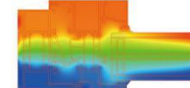


	profile design	three-chamber profile
	thermal insulation	24mm
	seal gasket	three level sealing
	glazing	22-50mm
	hardware	max.160kg visible, max.170kg concealed



DWS75 Aluminium Inward Opening Window

Frame Dimensions	
Frame	75mm
Sash	84mm









	profile design	three-chamber profile
	thermal insulation	multi-chamber insulating profile 35.3mm
	seal gasket	three level sealing with foam seal gaskets
	glazing	22-60mm
	hardware	max.160kg visible, max.170kg concealed
	thermal insulation option	Polyamide foam

» DWS Series

Wood-Aluminium Outward Opening Window



MAX.Product Performance

 Watertightness	9A (DIN EN 12208)
 Air permeability	4 Class (DIN EN 12207)
 Resistance to wind load	C4/B4 Class (DIN EN 12210)
 Thermal insulation	$U_r \geq 1.8 \text{ W/m}^2\text{K}$ (DIN EN ISO 10077-2)
 Noise insulation	40db (DIN 4109)
 Burglar resistance	RC2 (DIN EN 1627)

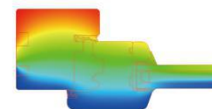
DERAD

» PRODUCTS

■ DWS68C Wood Outward Opening Window



Frame Dimensions	
Frame	68mm
Sash	58mm

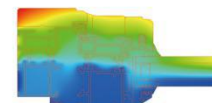


 profile design	solid timber profile
 seal gasket	two level sealing
 glazing	20mm
 hardware	max.60kg

■ DWS70 Wood-Aluminium Outward Opening Window



Frame Dimensions	
Frame	70mm
Sash	70mm



 profile design	thermal break aluminium profile + timber profile
 thermal insulation	14.8mm
 seal gasket	two levels sealing
 glazing	24mm
 hardware	max.60kg

■ DWS160 Alum-Clad Wood Outward Opening Window









Frame Dimensions	
Frame	160mm
Sash	50mm

 profile design	solid timber clad aluminium profile
 seal gasket	two level sealing
 glazing	24mm
 hardware	max.60kg

DWS Series Wood-Aluminium Inward Opening Window



MAX.Product Performance

	Watertightness	E900 (DIN EN 12208)
	Air permeability	4 Class (DIN EN 12207)
	Resistance to wind load	C4/B4 Class (DIN EN 12210)
	Thermal insulation	$U_r \geq 1W/m^2K$ (DIN EN ISO 10077-2)
	Noise insulation	40db (DIN 4109)
	Burglar resistance	RC2 (DIN EN 1627)

DERAD

PRODUCTS

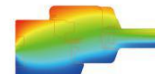




DWS68 Wood Inward Opening Window

Frame Dimensions

Frame 68mm

Sash 68mm



-  profile design
-  feature
-  seal gasket
-  glazing
-  hardware

solid timber profile
economy 58 series
two level sealing
22-30mm
max.160kg visible, max.170kg concealed

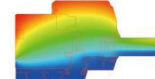


DWS68C Alum-Clad Wood Inward Opening Window

Frame Dimensions

Frame 86.5mm

Sash 86.5mm



-  profile design
-  feature
-  seal gasket
-  glazing
-  hardware

solid timber clad aluminium profile
economy 58 series and high performance 74 series available
four level sealing
22-30mm
max.160kg visible, max.170kg concealed

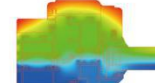


DWS70 Wood-Aluminium Inward Opening Window

Frame Dimensions

Frame 70mm

Sash 86.5mm



-  profile design
-  feature
-  thermal insulation
-  seal gasket
-  glazing
-  hardware

thermal break aluminium profile + timber profile
80 series high performance available
70 series:14.8mm / 80 series:20mm
three level sealing
22-40mm
max.160kg visible, max.170kg concealed

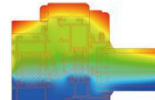




DWS90 Wood-Aluminium Inward Opening Window

Frame Dimensions

Frame 90mm

Sash 108mm



-  profile design
-  feature
-  thermal insulation
-  seal gasket
-  glazing
-  hardware
-  thermal insulation option

thermal break aluminium profile + timber profile
high performance
multi-chamber insulating profile 35.3mm
three level sealing
22-50mm
max.160kg visible, max.170kg concealed
polyamide foam



DWS102 Wood-Aluminium Inward Opening Window

Frame Dimensions

Frame 86.5mm

Sash 101.5mm









-  profile design
-  feature
-  thermal insulation
-  seal gasket
-  glazing
-  hardware

thermal break aluminium profile + timber profile
composite window together with the integrated solar shading
14.8mm
three level sealing
5mm+12A+5mm+55A+6mm
max.160kg visible, max.170kg concealed

» DDS Series Aluminium Casement Door



MAX.Product Performance

 Watertightness	5A (DIN EN 12208)
 Air permeability	2 Class (DIN EN 12207)
 Resistance to wind load	C3 Class (DIN EN 12210)
 Thermal insulation	$U_r \geq 2 \text{ W/m}^2\text{K}$ (DIN EN ISO 10077-2)
 Noise insulation	36db (DIN 4109)
 Burglar resistance	RC2 (DIN EN 1627)

DERAD

» PRODUCTS



■ DDS60 Aluminium Casement Door

Frame Dimensions

Frame 60mm

Sash 67mm



profile design three-chamber profile



thermal insulation 18.6mm



seal gasket two level sealing



glazing 22-35mm



hardware max.120kg



■ DDS65 Aluminium Casement Door

Frame Dimensions

Frame 65mm

Sash 73mm



profile design three-chamber profile



thermal insulation 24mm



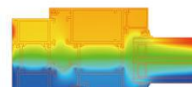
seal gasket two level sealing



glazing 22-40mm



hardware max.120kg



» DDS Series Aluminium Sliding & Bi-fold Door



MAX.Product Performance

Watertightness	7A (DIN EN 12208)
Air permeability	3 Class (DIN EN 12207)
Resistance to wind load	C3 Class (DIN EN 12210)
Thermal insulation	$U_r \geq 1.9W/m^2K$ (DIN EN ISO 10077-2)
Noise insulation	38db (DIN 4109)
Burglar resistance	RC2 (DIN EN 1627)

DERAD

» PRODUCTS



■ DDS100 Aluminium Sliding Door

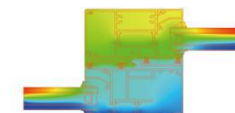
Frame Dimensions	
Frame	100mm
Sash	40mm

feature	100 series non-thermalbreak profile available
glazing	22-30mm
thermal insulation	frame:24mm sash:20mm
weight loading per leaf	max.200kg



■ DDS120 Aluminium Lift & Slide Door

Frame Dimensions	
Frame	120mm
Sash	50mm



glazing	22-30mm
thermal insulation	14.8mm
weight loading per leaf	max.150kg/max.300kg



■ DDS70 Aluminium Bi-fold Door







Frame Dimensions	
Frame	70mm
Sash	70mm

glazing	22-30mm
thermal insulation	24mm
weight loading per leaf	max.70kg/sash

» **DDS Series** Wood-Aluminium Sliding Door



MAX.Product Performance

	Watertightness	7A (DIN EN 12208)
	Air permeability	3 Class (DIN EN 12207)
	Resistance to wind load	C3 Class (DIN EN 12210)
	Thermal insulation	$U_f \geq 1.6 \text{ W/m}^2\text{K}$ (DIN EN ISO 10077-2)
	Noise insulation	38db (DIN 4109)
	Burglar resistance	RC2 (DIN EN 1627)

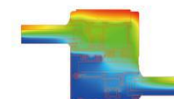
DERAD





» **PRODUCTS**



■ **DDS125 Wood-Aluminium Sliding Door**

Frame Dimensions	
Frame	125mm
Sash	55mm

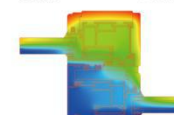






	profile design	thermal break aluminium profile + solid timber profile
	thermal insulation	frame:18mm sash:12mm
	glazing	22-30mm
	weight loading per leaf	max.200kg



■ **DDS170 Wood-Aluminium Lift & Slide Door**

Frame Dimensions	
Frame	170mm
Sash	74mm

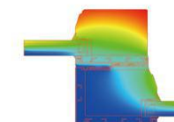




	profile design	thermal break aluminium profile + timber profile
	thermal insulation	frame:14.8mm sash:12mm
	glazing	22-30mm
	weight loading per leaf	max.150kg/max.300kg



■ **DDS170 Alum-Clad Wood Lift & Slide Door**

Frame Dimensions	
Frame	170mm
Sash	74mm






	profile design	solid timber clad aluminium profile
	glazing	22-30mm
	weight loading per leaf	max.150kg/max.300kg



■ **DDS170 Wood Lift & Slide Door**

Frame Dimensions	
Frame	170mm
Sash	74mm




	profile design	solid timber profile
	glazing	22-30mm
	weight loading per leaf	max.150kg/max.300kg

» DWS 88 Aluminium Sliding Window








Frame Dimensions

Frame	88mm
Sash	40mm

 glazing	22-30mm
 thermal insulation	14.8mm
 weight loading per leaf	150kg

MAX.Product Performance

 Watertightness	7A (DIN EN 12208)
 Air permeability	2 Class (DIN EN 12207)
 Resistance to wind load	C3 Class (DIN EN 12210)
 Thermal insulation	$U_r \geq 2.4W/m^2K$ (DIN EN ISO 10077-2)
 Noise insulation	30db (DIN 4109)
 Burglar resistance	RC2 (DIN EN 1627)

DERAD

» PRODUCTS

Custom-Shaped Windows

At DERAD, custom-shaped windows are made-to-order to your specific requirements, including circular windows, oval shaped windows, arched windows, pentagon shaped windows, octagon shaped windows, trapezoid shaped window, triangular windows.



Projects by DERAD

Curtain Walls & Conservatories



Projects by DERAD

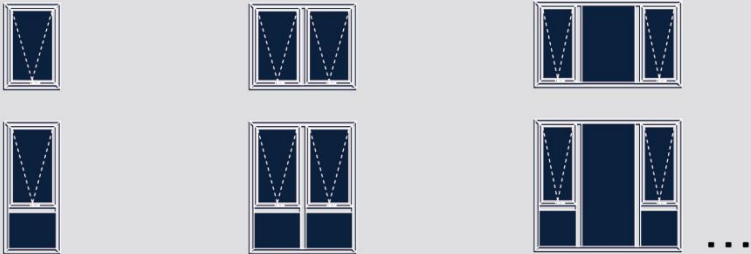
Glass & Glazing

The glass used in today's window and facades does more things than many people perhaps realize. From prime concerns like safety, security, and environmental protection to convenient functions like self cleaning or practical qualities like scratch resistance or design aspects, the choices are many and varied.

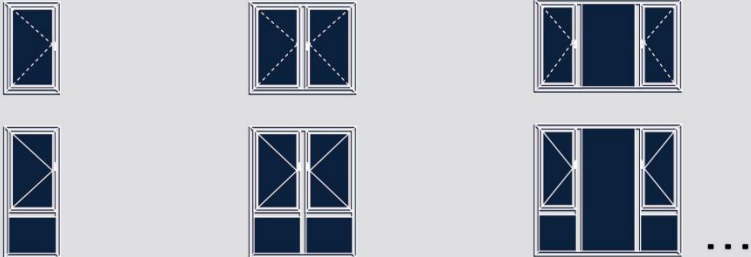
DERAD offers a range of quality glass options for your windows and doors, including standard clear float glass, toughened safety glass, laminated glass, Low E glass and to meet different needs.



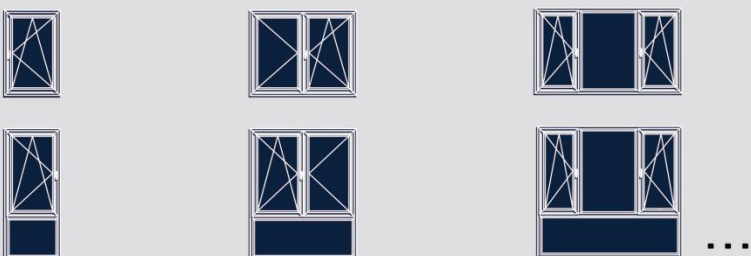
Awning Window



Casement Window



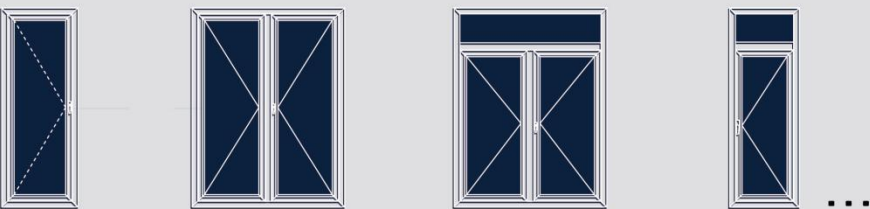
Tilt & Turn Window



Custom Shaped Window



Casement Door



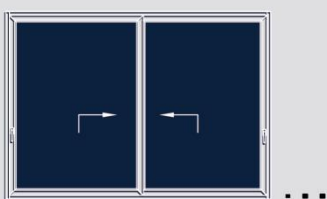
Bi-Fold Door



Sliding Door



Lift & Slide Door



Sliding Window



PROJECTS

WITH 30 YEARS MANUFACTURING EXPERIENCE



PROJECT: THE BAY
LOCATION: SHANGHAI
PROJECT SCALE: 13000M²



PROJECT: LUJIAZUI ELITE CITY
LOCATION: SHANGHAI
PROJECT SCALE: 20000M²



PROJECT: GREENLAND FENGHUI CENTRE
LOCATION: SHANGHAI
PROJECT SCALE: 15000M²



PROJECT: FRAGRANT VILLA
LOCATION: SHANGHAI
PROJECT SCALE: 10000M²



PROJECT: BAOHUA ORIGINAL VILLA
LOCATION: NANJING
PROJECT SCALE: 5000M²



PROJECT: THE SANCTURY AT DONG TAN
LOCATION: SHANGHAI
PROJECT SCALE: 15000M²



PROJECT: RONGXIN PLATINUM BAY
LOCATION: WENZHOU
PROJECT SCALE: 12000M²



PROJECT: SUNSHINE BAY
LOCATION: SHANGHAI
PROJECT SCALE: 10000M²



PROJECT: TAIHU VIEW PARK
LOCATION: WUXI
PROJECT SCALE: 6000M²



PROJECT: ELYSEE ROYALE
LOCATION: KUNSHAN
PROJECT SCALE: 9000M²



PROJECT: GREENTOWN MAJESTIC
LOCATION: SUZHOU
PROJECT SCALE: 18000M²



PROJECT: THE WHARF ROYAL PARK
LOCATION: WUXI
PROJECT SCALE: 17000M²



PROJECT: BOEE SCENERY COAST
LOCATION: SHANGHAI
PROJECT SCALE: 18000M²



PROJECT: GRAND MANSION
LOCATION: SHANGHAI
PROJECT SCALE: 16000M²



PROJECT: THE STAY CLUB
LOCATION: LONDON, UK
PROJECT SCALE: 3000M²

DERAD